

# Gamma FUSION IoT

# Gamma FUSION IoT

## Welcome to FUSION IoT

Connecting devices, empowering smarter decisions, and shaping the future for your business.

FUSION IoT delivers seamless IoT connectivity by integrating device management, real-time monitoring of SIMs, and advanced analytics into one powerful platform. Combining robust network infrastructure with global connectivity options, FUSION IoT is designed to simplify, enhance, and transform how businesses manage their IoT devices.

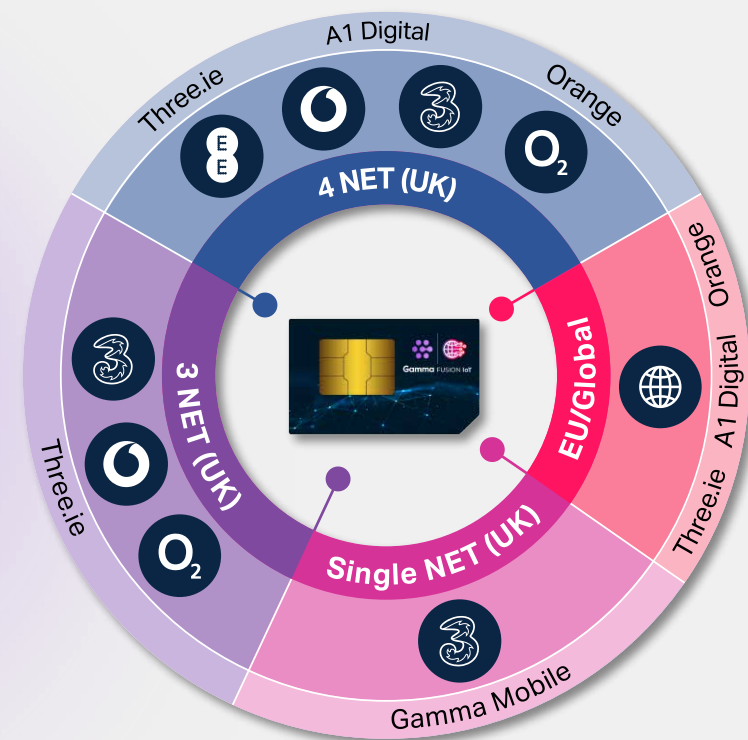
**Unlock the full potential of your connected devices with FUSION IoT and drive your business forward.**





# What is FUSION IoT?

**FUSION IoT** is a comprehensive IoT connectivity solution designed to meet the needs of businesses across various sizes and industries. It provides reliable connectivity for both single and multi-networks, ensuring robust performance regardless of location\*. By integrating diverse connectivity options, including direct access to Mobile Network Operators (MNOs), FUSION IoT delivers a unified platform for managing SIMs and devices in real time, enhancing operational efficiency and supporting informed decision-making.



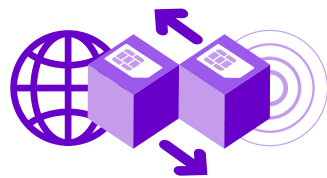
\*FUSION IoT provides access to multiple mobile networks, extending coverage and enhancing resilience. However, connectivity is subject to the availability of suitable mobile networks in the area. All four UK networks are available if required, providing an extensive footprint and improved service reliability.



# How does it work?

**FUSION IoT** enables you to activate, monitor and manage your IoT devices in real time, globally, through our powerful, centralised web portal and API.

Gain real-time visibility into device usage, empowering you to control mobile connectivity costs. Easily configurable rules automate the management of unexpected events, ensuring your IoT devices always have the appropriate data plans.



## Devices

Deploy specialised devices tailored for specific use cases, such as asset tracking, customer analytics, and predictive maintenance. Each device is designed for optimal performance in its designated function.



## Connectivity

After testing and shipping, activate your **FUSION IoT** SIM cards to gain full control over your devices. Enjoy real-time monitoring and optimisation of your IoT connectivity to ensure seamless operation.



## Analysis

Leverage our API integrations to access valuable insights through comprehensive analytics. **FUSION IoT** aggregates data consumption from the device, allowing you to understand and optimise usage.



# Industry Solutions:

## Revolutionise your business, elevate customer experiences, and discover new opportunities



### Smart Building

Enhance advanced security systems, smart metering, automated lighting, heating solutions, and facility management.



### Retail

Improve Point of Sale (POS) terminals, digital signage, inventory management, and real-time product availability.



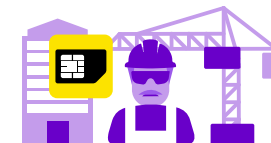
### Agriculture

Optimise crop and yield monitoring, livestock management, fence monitoring, and automated irrigation systems.



### Manufacturing

Lead in predictive maintenance, production monitoring, machine downtime management, on-site safety, and supply chain optimisation.



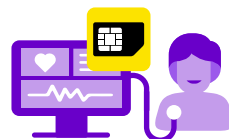
### Construction

Monitor construction progress, manage equipment and resources, ensure worker safety, and analyse project data.



### Logistics

Revolutionise fleet management, cargo handling, condition monitoring, warehouse automation, traffic control, and passenger experience.



### Healthcare

Implement advanced patient monitoring, medication management, patient medical history tracking, telecare devices, and homecare solutions.



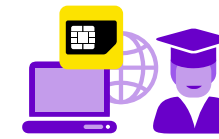
### Energy

Advance smart metering, demand forecasting, EV charging infrastructure, and precise condition monitoring.



### Finance

Oversee suspicious transactions, smart ATMs, customer insights, and financial risk management.



### Education

Develop interactive learning environments, track attendance, support remote learning, and assess academic performance.

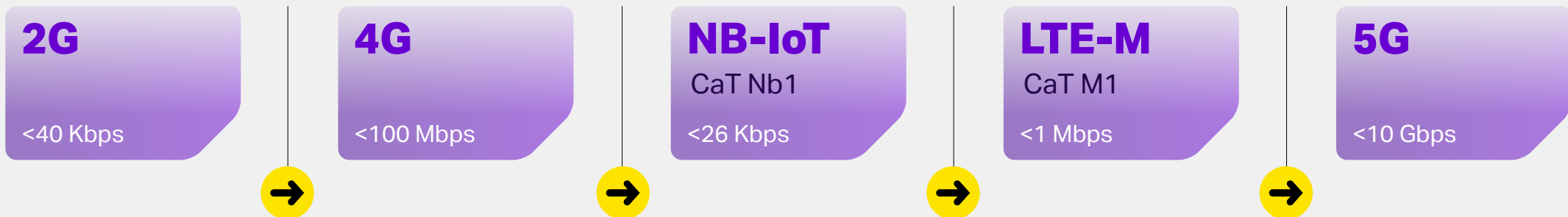


# FUSION IoT SIM Card: A single SIM for your global IoT needs

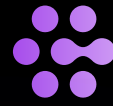
With adaptable SIM connectivity, **FUSION IoT** SIM Cards have direct access to multiple networks across the globe, ensuring reliable single network and multi-network connectivity regardless of location or network preference, empowering you to customise your IoT deployments to meet specific requirements.

Always Connected, Everywhere

**FUSION IoT** SIM Cards support a range of connectivity standards to meet various device applications and use cases:

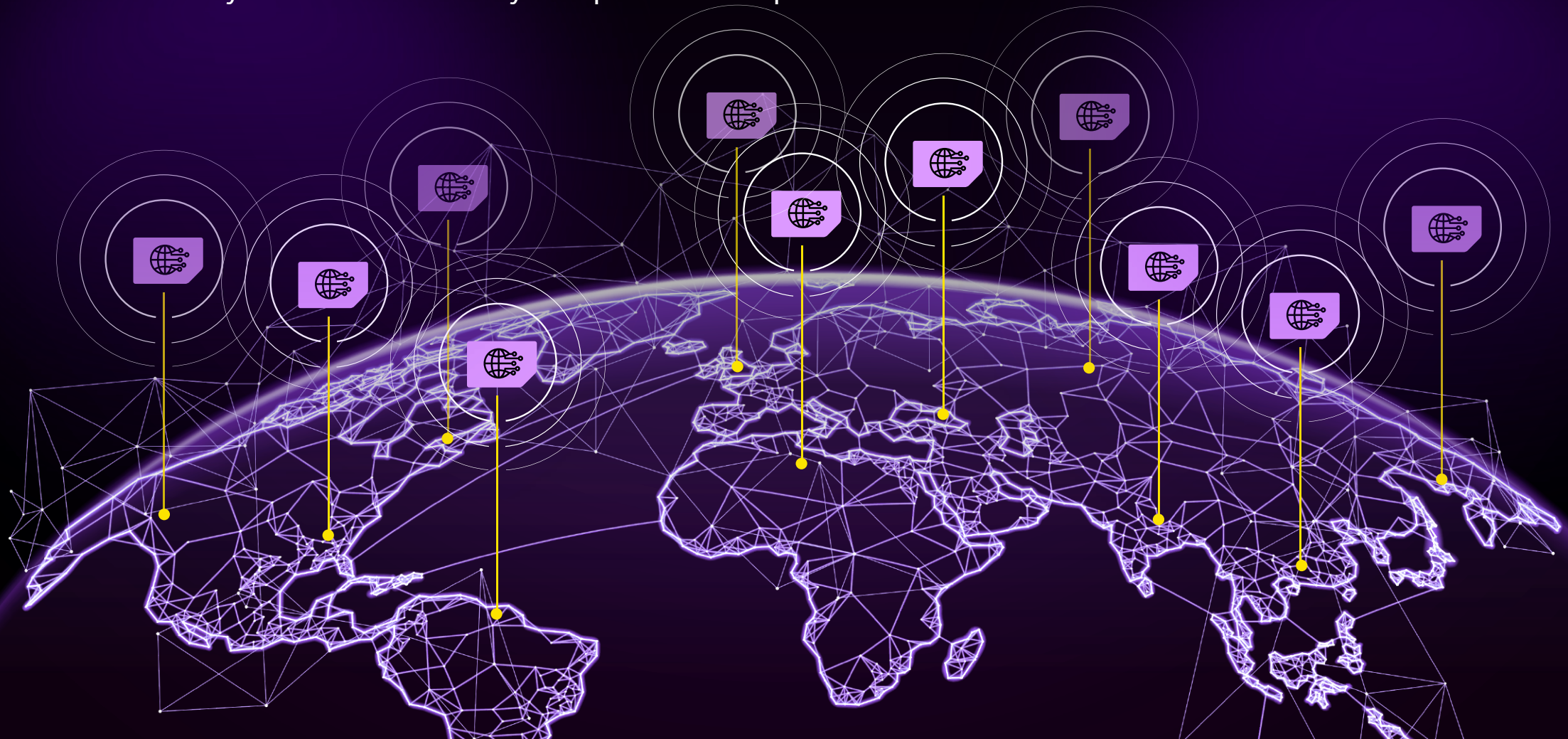


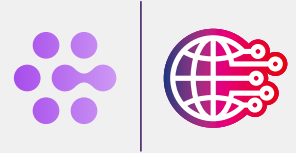
Device compatibility depends on the specific device design and application requirements, with FUSION IoT supporting a range of connectivity standards from 2G to 5G.



# Global and Regional Coverage

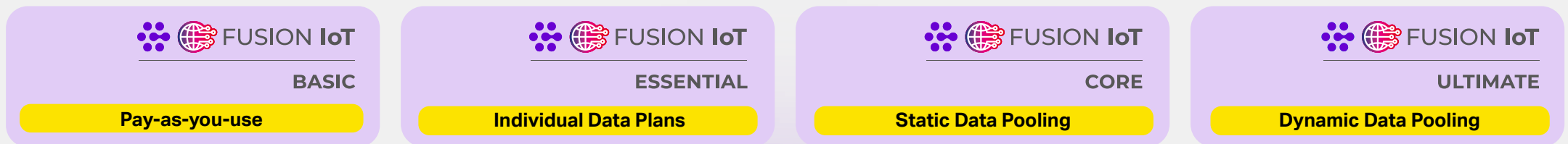
FUSION IoT SIM Cards provide extensive coverage options to fit your needs. Whether you require connectivity across entire regions like Europe or specific countries such as the United Kingdom, you can ensure reliable performance wherever your devices are deployed. This flexibility allows you to scale and adapt your connectivity solutions based on your operational requirements.



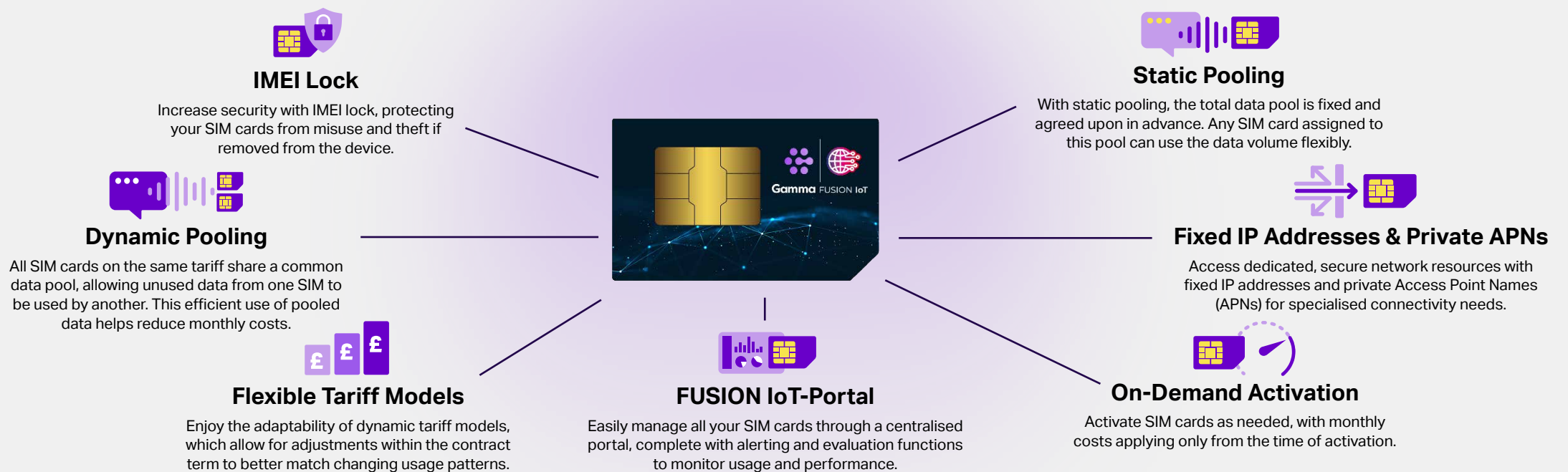


# Flexible Tariff Models

FUSION IoT offers a range of tariff models tailored to your usage needs, from fixed data volumes with predictable monthly fees to pay-per-use options. Choose from a variety of plans to match your specific consumption patterns and optimise cost efficiency.



## Additional Services and Features included as standard\*:



\*Some services and features are network dependant

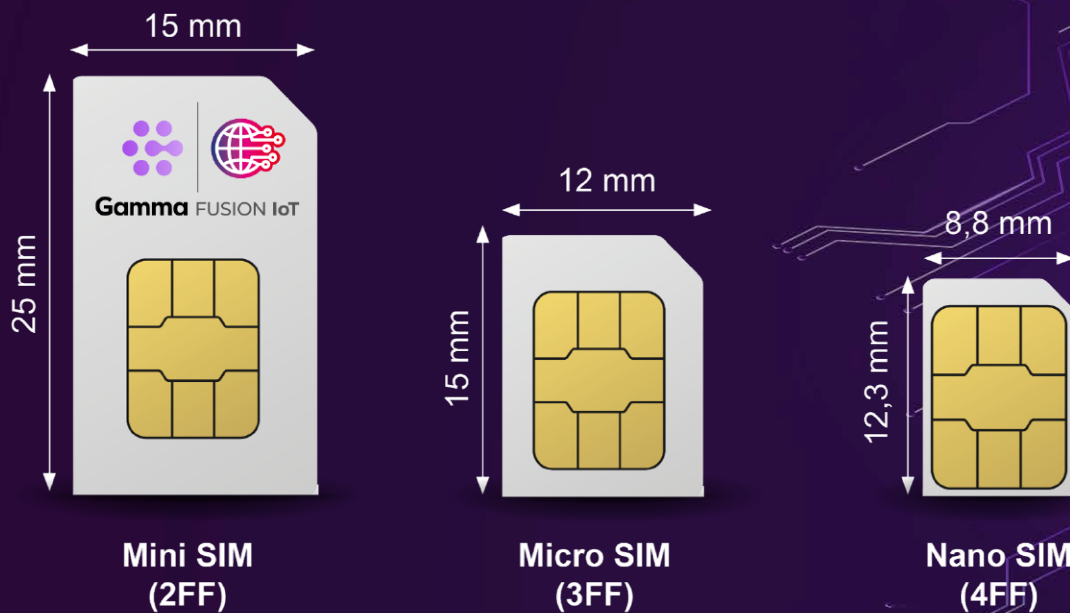


# FUSION IoT SIM sizes and form factors

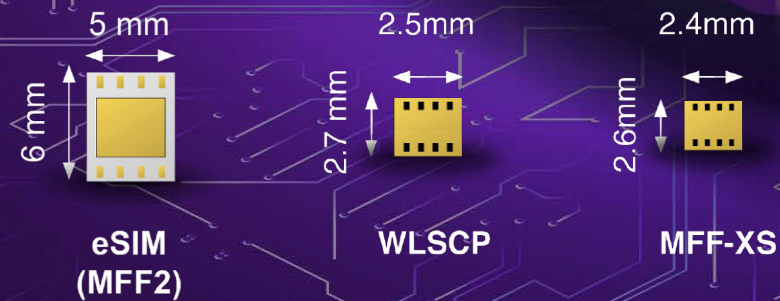
Any size for any IoT device and application.

FUSION IoT SIM cards are designed to meet the diverse needs of your IoT deployments. Available in a variety of sizes and form factors, including ruggedised, high-durability standard removable (Mini, Micro, and Nano), and soldered eSIM options, you can ensure seamless connectivity for any IoT device and application. Easily order the SIM cards you need through the FUSION IoT portal.

## REMOVABLE SIM



## SOLDERED eSIM





# Meet the SIM that brings eSIM technology to any device

## Removable Physical eSIM

FUSION IoT revolutionises connectivity with its removable physical eSIM, a game-changing solution that opens up eSIM technology to a vast range of devices. Whether you're upgrading existing hardware or enhancing new deployments, our removable eSIM offers unparalleled flexibility and benefits.

## Transform Existing Devices:

A standout feature of FUSION IoT, removable eSIM is transforming the landscape by bringing eSIM technology to devices without built-in eSIM support. Given that many devices on the market lack embedded eSIM capabilities, this innovation opens up the technology to thousands of existing models and millions of new users. Not only does this extend the lifespan of your existing hardware, but it also reduces capital costs, making advanced eSIM features accessible through a simple card insertion. It's perfect for businesses seeking to upgrade legacy devices or deployments with a diverse range of devices, providing a seamless path to adopting the latest in connectivity technology.

## Over-The-Air (OTA) Network Switching:

Effortlessly manage and update your devices remotely with FUSION IoT's OTA capabilities. This feature ensures your entire fleet stays connected and up-to-date without requiring physical intervention, making it ideal for large-scale IoT deployments where manual updates are impractical and costly.



## Supporting eSIM-Capable Devices

**Seamless Integration:** For devices that already support eSIM technology, FUSION IoT's solution ensures smooth and reliable connectivity.

Our technology integrates seamlessly with eSIM-capable devices, providing robust network access and maintaining consistent performance across various environments.

## Future-proof Solutions

FUSION IoT's eSIM connectivity is designed to adapt to evolving technologies and network conditions. Whether retrofitting existing devices with our removable physical eSIM or leveraging connectivity for eSIM-capable devices, we provide a future-proof solution that supports your business's needs.

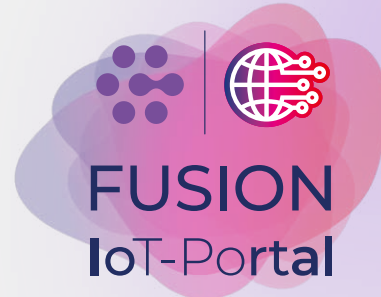
Our approach sets a new standard in connectivity by making advanced eSIM technology accessible to all device types, empowering you to manage and maintain your IoT deployments with exceptional flexibility and reliability.



# FUSION IoT-Portal

## Seamless Management of Thousands of Devices, Anytime, Anywhere.

The **FUSION IoT** Portal offers a unified platform to manage your SIM cards and IoT devices with ease. It provides real-time access and comprehensive control over your connectivity, enabling efficient management and optimisation of your operations.



### Simple Management & Transparency

Gain complete control over your SIM card estate across all network operators through a single, intuitive platform.

### Comprehensive SIM Card Management

Effortlessly handle all aspects of SIM card operations:

- Activate SIM cards individually or in bulk.
- Automate SIM activation when data is consumed.
- Block, deactivate, or update SIM card functionality as needed.
- Assign SIM cards to specific tariffs and data pools.

### Advanced Monitoring and Alerts

Stay proactive with sophisticated alerting features:

- Set personalised alerts for specific SIM cards or data pools.
- Configure multi-level notifications for data usage (e.g., at 80% and 95% of a pool).
- Manage billing efficiently with timely usage notifications to avoid unexpected costs.

### In-Depth Usage Tracking

Access detailed analytics and usage reports to monitor:

- Real-time updates on data, SMS, and voice usage.
- Monitor usage trends and historical data with customisable timeframes.

### Customisable SIM Card Overview

The FUSION IoT-Portal provides a detailed view of your SIM card estate, featuring:

- Customisable fields for tracking deployments and locations.
- Adjustable management views and filters for efficient oversight.
- Detailed analytics and reporting for both individual SIM cards and data pools.

### Additional Benefits of FUSION IoT

#### Clear and Transparent Billing:

All networks consolidated into a single bill.

#### Seamless Integration:

Effortlessly connect with existing systems using comprehensive APIs, enabling management of the FUSION IoT service through your preferred business platform.

#### Customised Access Control:

Tailored user permissions and role management to fit specific needs.

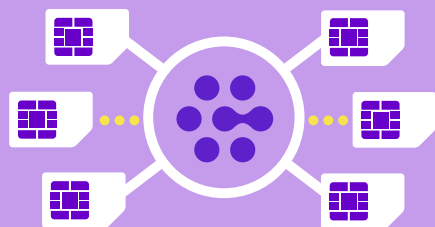
#### Available on any device:

Platform accessible from smartphones and tablets.



# Why Gamma

Value added services to enrich your business communication solutions.



## Comprehensive Data Management

Gamma oversees all data traffic, whether it's on single or multi-network SIMs, to optimise your connectivity.



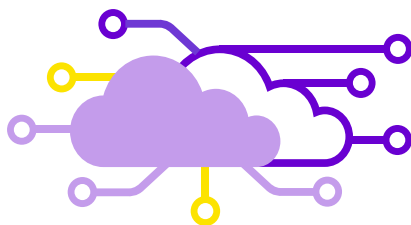
## Expertise and Experience

With 20 years in cloud-first communication services, we bring a deep understanding of business operations and processes.



## 24/7 UK Support

Our UK-based support teams provide 24/7 first-line assistance to ensure your operations run smoothly.



## Enhanced Quality of Service

Benefit from direct access to Mobile Network Operators for superior service and performance.



## Robust Data Capacity

Our network handles a large volumes of IoT data traffic, showcasing our ability to support high-volume data needs.



# 30,000

## Empowering Customers with Reliable IoT Connectivity

Trusted by over 30,000 customers worldwide, FUSION IoT delivers reliable and flexible connectivity solutions.

